

SINGLE STAGE FLOW CONTROL SERVO-VALVE

MODEL 110 Series



LHC

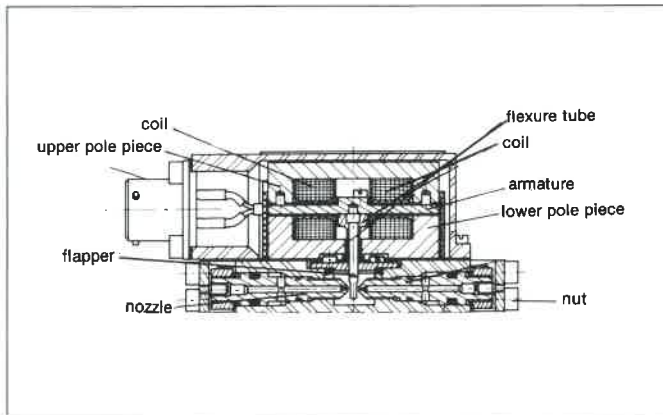
l'Hydraulique Châteaudun

Servo-valves et Asservissements Electrofluidiques

Single stage flow control servo-valve

MODEL 110 series

PRINCIPLE OF OPERATION



TECHNICAL FEATURES

Δp maximum : 100 bar

Supply pressure : 210 bar

Hysteresis : < 2 % of rated current

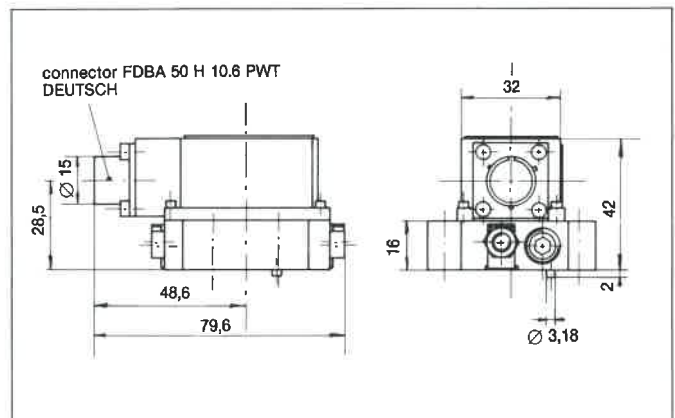
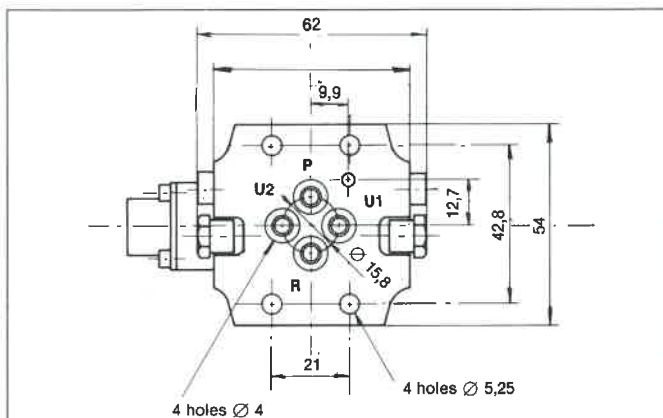
Fluids : Kerosene, diesel oil
MIL H 5606/AIR 3520

Nominal : 0,025 W

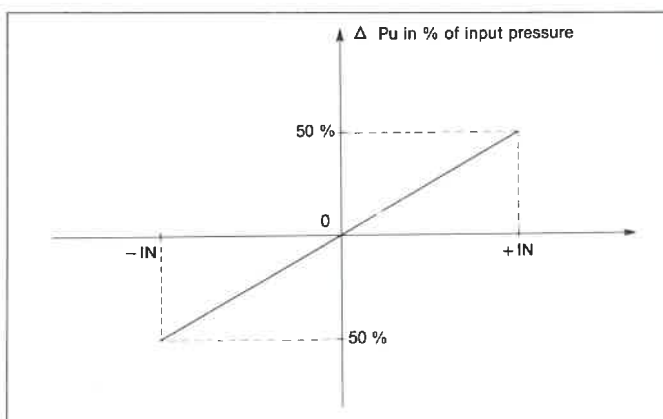
Weight : 200 g

Electrical connector and coil configuration is optional.

INSTALLATION DETAILS



FLOW CURVE



EXAMPLE OF APPLICATION

Braking system for FALCON 10, JAGUAR.
ALPHA JET

Fuel control for APU for tanks

Fuel control for engines of drones

Fuel control for MAKILA engine (TURBOMECA)
etc.

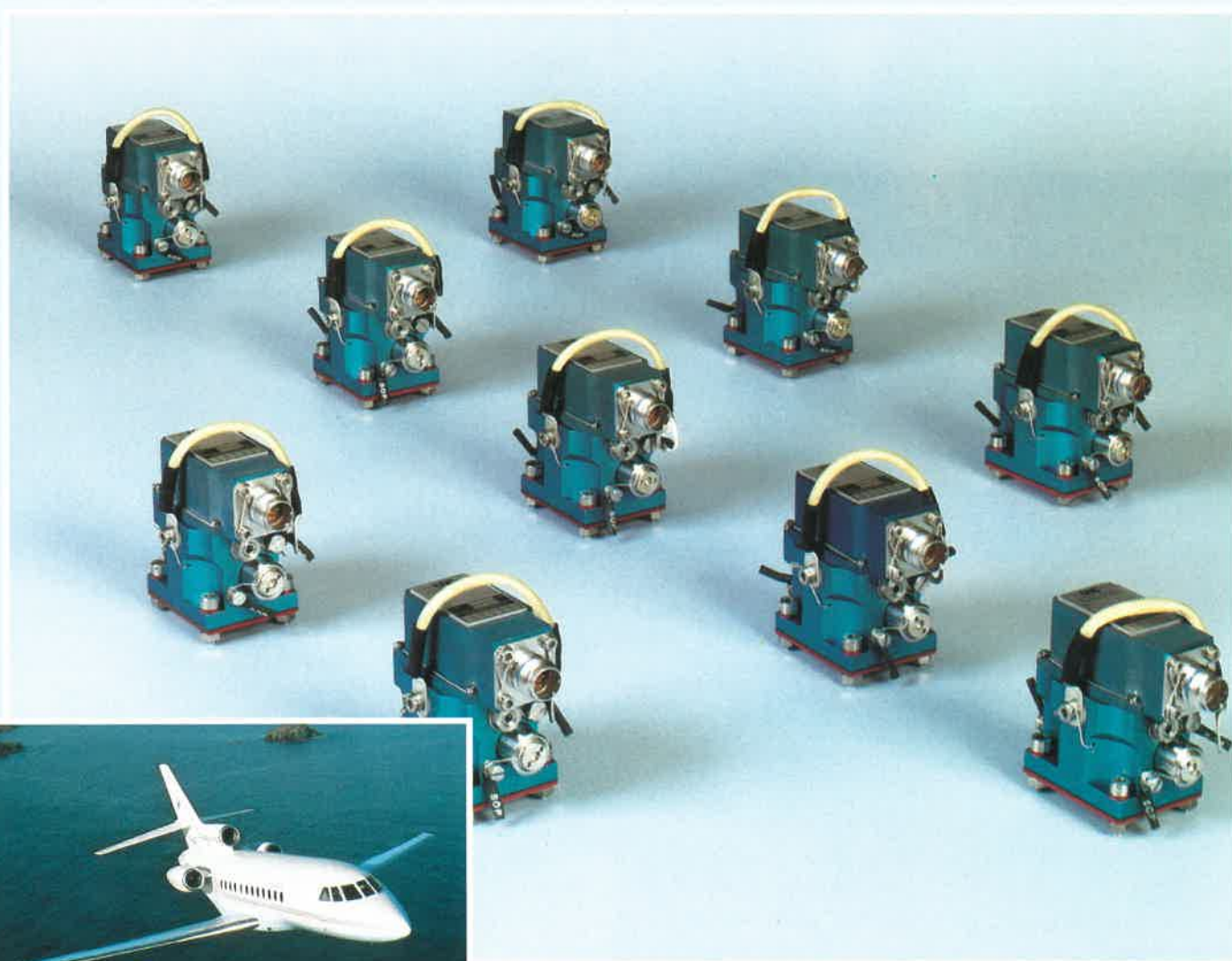
SERVICE COMMERCIAL :
Tour Avenir Ouest B - 64, rue du 8-Mai 1945
92025 NANTERRE Cedex
Tél. (1) 47 24 10 30
Télex : 612.467 LHC COM
Téléfax : 47 24 47 00

LHC
l'Hydraulique Châteaudun
Servo-valves et Asservissements Electrofluidiques

SIEGE ET USINE :
Route de Jallans
28200 CHATEAUDUN
Tél. : 37 45 02 18
Télex : 760.333 HYDRCHA

TWO-STAGE FLOW CONTROL SERVO-VALVE

MODEL 120 Series



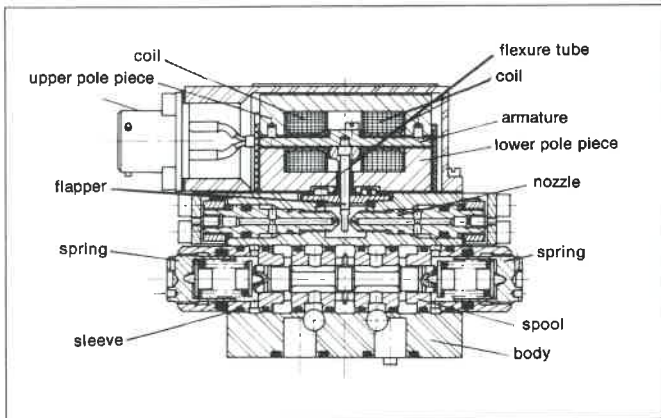
LHC

l'Hydraulique Châteaudun

Servo-valves et Asservissements Electrofluidiques

Two stage flapper nozzle flow control valve MODEL 120 series

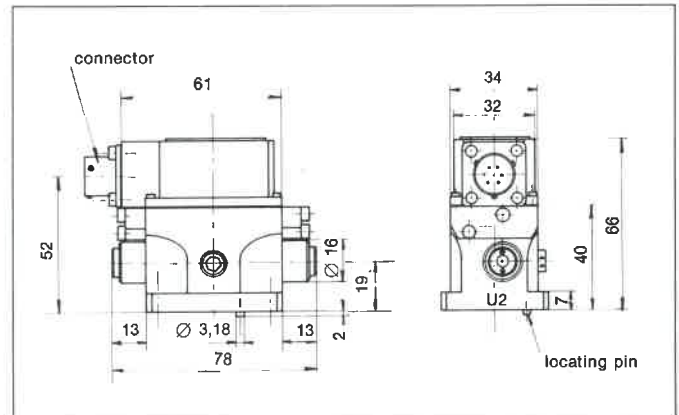
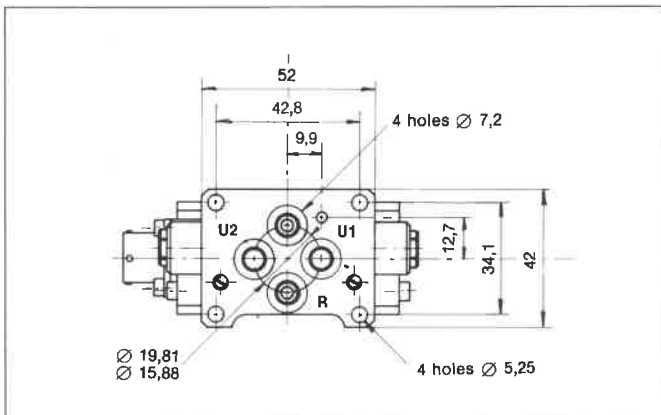
PRINCIPLE OF OPERATION



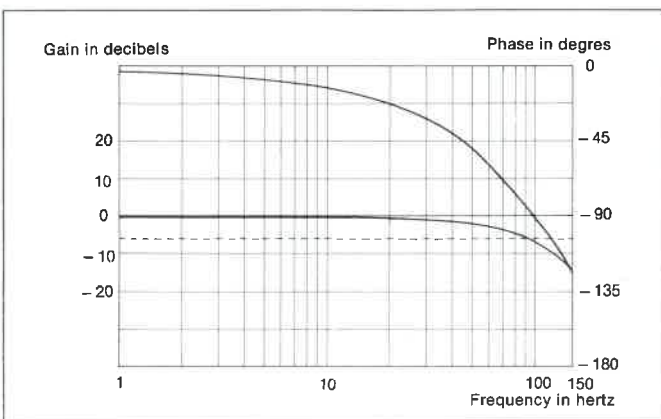
TECHNICAL FEATURES

- Type : 2, 3 or 4 ways
- No load rated flow : A. 0,8 l/min. to 30 l/min.
B. 20 l/min. to 45 l/min.
- Supply pressure : 210 bar maximum
- Hysteresis : < 3 % of rated current
- Linearity : < 7 % of rated current
- Internal filtration : 10 microns
- Fluid : phosphate ester
MIL H 5606/AIR 3520
MIL H 83282
- Nominal supply : 0,065 W
- Weight : 490 g
- Electrical connector and coil configuration is optional.

INSTALLATION DETAILS



FREQUENCY RESPONSE CURVE



EXAMPLE OF APPLICATION

Nozzle wheel steering
FALCON 10, FALCON 50, FALCON 900
ALPHA JET
AS 332 "SUPER PUMA"
etc.

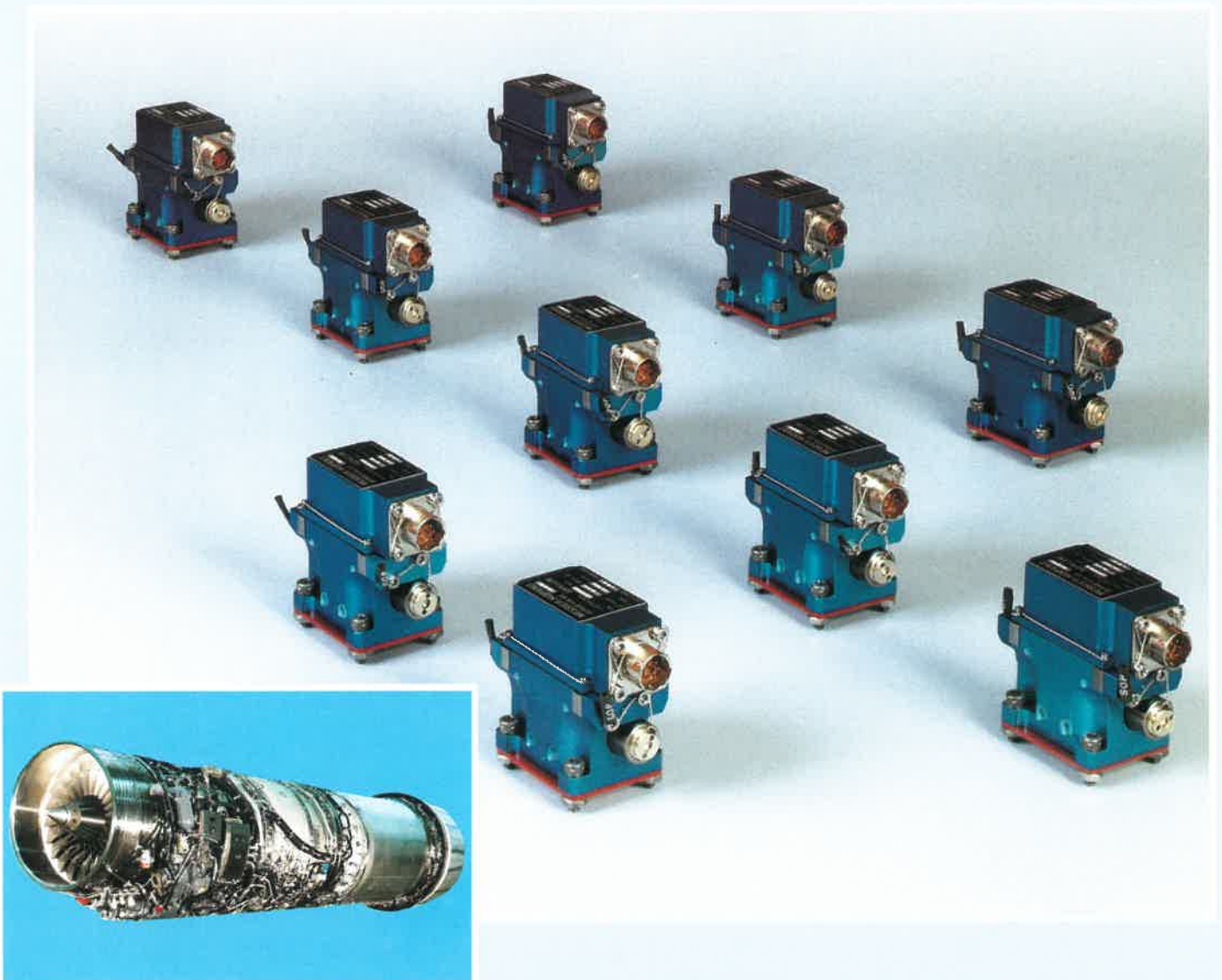
SERVICE COMMERCIAL :
Tour Avenir Ouest B - 64, rue du 8-Mai 1945
92025 NANTERRE Cedex
Tél. (1) 47 24 10 30
Téléx : 612.467 LHC COM
Téléfax : 47 24 47 00

LHC
l'Hydraulique Châteaudun
Servo-valves et Asservissements Electrofluidiques

SIÈGE ET USINE :
Route de Jallans
28200 CHATEAUDUN
Tél. : 37 45 02 18
Télex : 760.333 HYDRCHA

TWO-STAGE FLOW CONTROL SERVO-VALVE FUEL APPLICATION

MODEL 125 Series



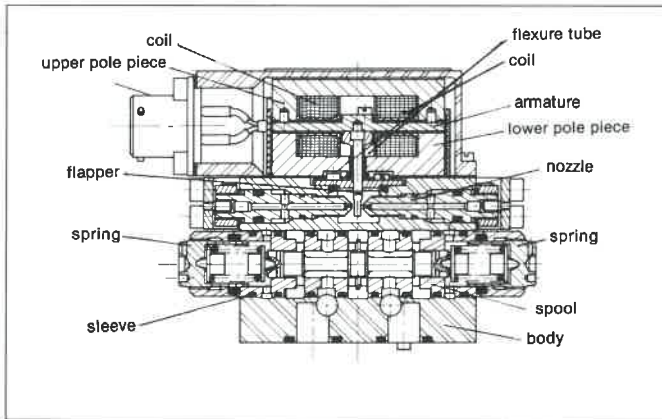
LHC
l'Hydraulique Châteaudun
Servo-valves et Asservissements Electrofluidiques

Two-stage flapper nozzle flow control valve

Fuel application

MODEL 125 series

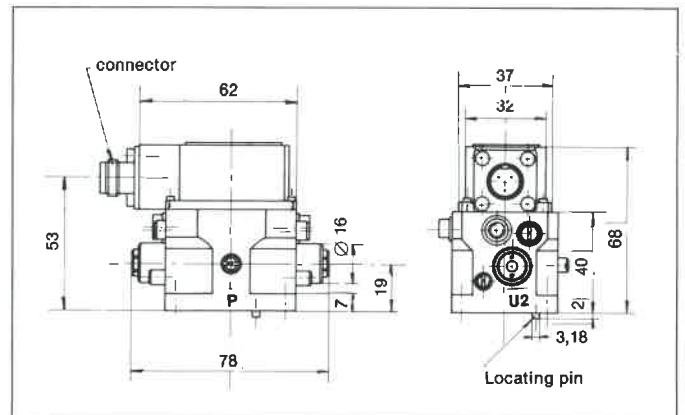
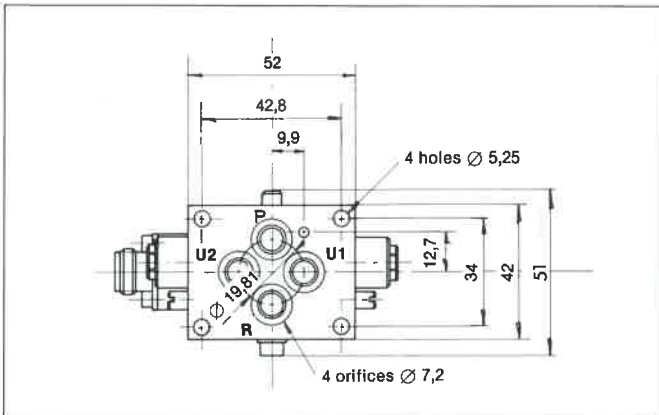
PRINCIPLE OF OPERATION



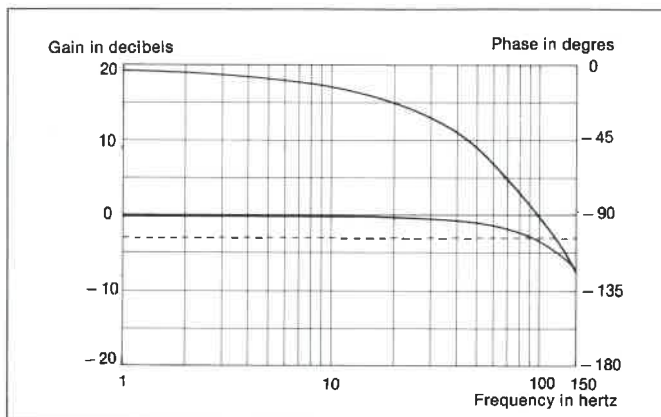
TECHNICAL FEATURES

- Type : 2, 3 or 4 ways
- No load rated flow : 10 l/min. at $\Delta p = 90$ bar
- Supply pressure : 50 to 210 bar
- Hysteresis : < 3 % of rated current
- Linearity : < 7 % of rated current
- Internal filtration : 45 microns
- Fluid : Kerosene
- Nominal power : 0,065 W
- Weight : 485 g
- Electrical connector and coil configuration is optional.

INSTALLATION DETAILS



FREQUENCY RESPONSE CURVE



EXAMPLE OF APPLICATION

SNECMA engine M53P2
etc.

SERVICE COMMERCIAL :
Tour Avenir-Ouest B - 64, rue du 8-Mai 1945
92025 NANTERRE Cedex
Tél. (1) 47 24 10 30
Télex : 612.467 LHC COM
Téléfax : 47 24 47 00

LHC
l'Hydraulique Châteaudun
Servo-valves et Asservissements Electrofluidiques

SIÈGE ET USINE :
Route de Jallans
28200 CHATEAUDUN
Tél. : 37 45 02 18
Télex : 760.333 HYDRCHA

TWO-STAGE PRESSURE CONTROL SERVO-VALVE

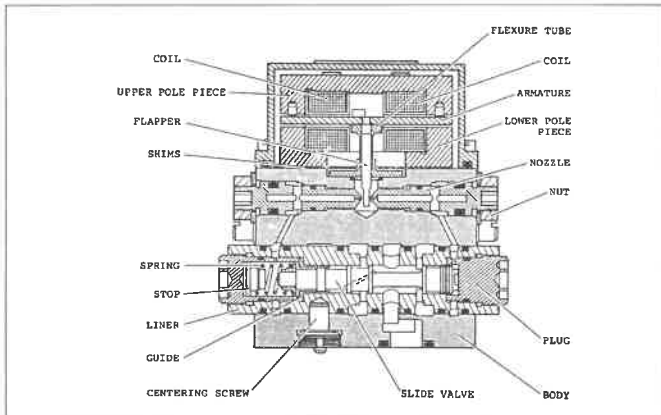
MODEL 150 Series



LHC
l'Hydraulique Châteaudun
Servo-valves et Asservissements Electrofluidiques

Two stage nozzle flapper pressure control servo-valve MODEL 150 series

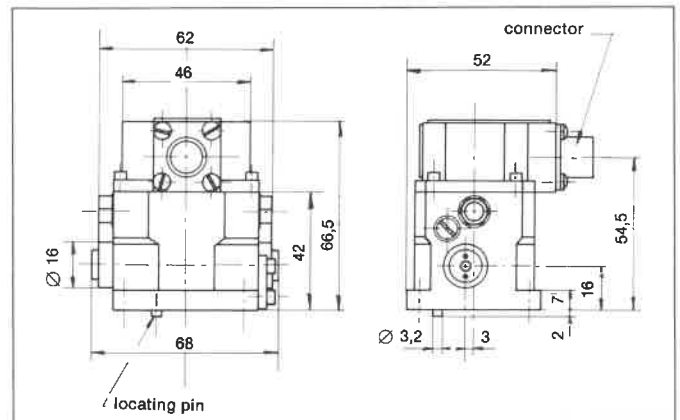
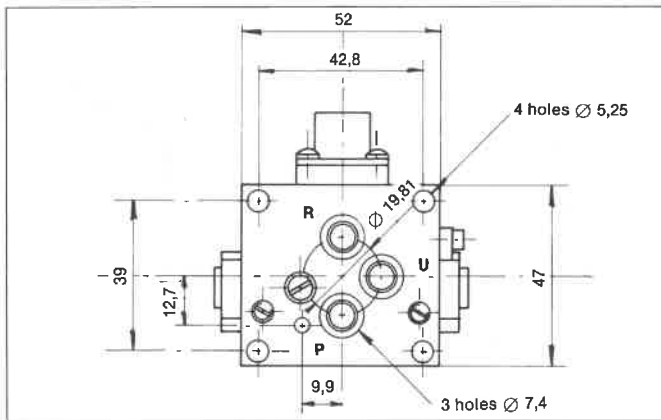
PRINCIPLE OF OPERATION



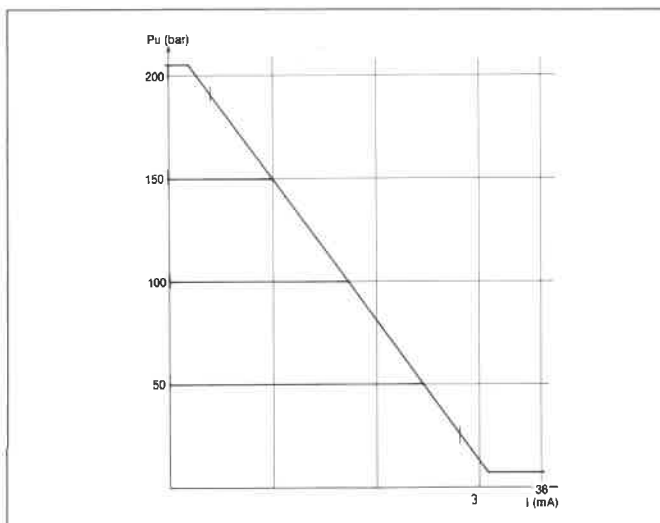
TECHNICAL FEATURES

- Type : 3 ways
- Maximum flow : 20 l/min. at $\Delta p = 11$ bar
- Dynamic response : 90° at $f = 11.5$ Hz
- Supply pressure : 50 to 210 bar
- Hysteresis : $< 3\%$ of rated current
- Linearity : $< 3\%$ of rated current
- Internal filtration : 10 microns
- Fluid : Phosphate ester
MIL H 5606/AIR 3520
MIL H 83282
- Nominal power : 0,1 W
- Weight : 480 g
- Electrical connector and coil configuration is optional.

INSTALLATION DETAILS



PRESSURE CURVE



EXAMPLE OF APPLICATION

Braking system (M.H.B.) :
CONCORDE, MERCURE, FALCON 900
AIRBUS A 300B, A 310, A 300-600, A 320
MIRAGE F1
AMX (Embraer, Aeritalia)
etc.

SERVICE COMMERCIAL :
Tour Avenir Ouest B - 64, rue du 8-Mai 1945
92025 NANTERRE Cedex
Tél. (1) 47 24 10 30
Télex : 612.467 LHC COM
Téléfax : 47 24 47 00

LHC
l'Hydraulique Châteaudun
Servo-valves et Asservissements Electrofluidiques

SIEGE ET USINE :
Route de Jallans
28200 CHATEAUDUN
Tél. : 37 45 02 18
Télex : 760.333 HYDRCHA